



Lfc Polyclonal Antibody

Catalog No	YP-Ab-16182
Isotype	IgG
Reactivity	Human;Mouse;Rat
Applications	WB;ELISA;IHC
Gene Name	ARHGEF2
Protein Name	Rho guanine nucleotide exchange factor 2
Immunogen	The antiserum was produced against synthesized peptide derived from C-terminal human ARHGEF2. AA range:851-900
Specificity	Lfc Polyclonal Antibody detects endogenous levels of Lfc protein.
Formulation	Liquid in PBS containing 50% glycerol, 0.5% BSA and 0.02% sodium azide.
Source	Polyclonal, Rabbit,IgG
Purification	The antibody was affinity-purified from rabbit antiserum by affinity-chromatography using epitope-specific immunogen.
Dilution	WB 1:500-2000;IHC-p 1:50-300; ELISA 2000-20000
Concentration	1 mg/ml
Purity	≥90%
Storage Stability	-20°C/1 year
Synonyms	ARHGEF2; KIAA0651; LFP40; Rho guanine nucleotide exchange factor 2; Guanine nucleotide exchange factor H1; GEF-H1; Microtubule-regulated Rho-GEF; Proliferating cell nucleolar antigen p40
Observed Band	111kD
Cell Pathway	Cytoplasm, cytoskeleton . Cytoplasm . Cell junction, tight junction . Golgi apparatus . Cytoplasm, cytoskeleton, spindle . Cell projection, ruffle membrane . Cytoplasmic vesicle . Localizes to the tips of cortical microtubules of the mitotic spindle during cell division, and is further released upon microtubule depolymerization (PubMed:15827085). Recruited into membrane ruffles induced by <i>S.flexneri</i> at tight junctions of polarized epithelial cells (PubMed:19043560). Colocalized with NOD2 and RIPK2 in vesicles and with the cytoskeleton (PubMed:21887730) .
Tissue Specificity	Brain,Cervix carcinoma,Epithelium,Platelet,
Function	domain:The DH (DBL-homology) domain interacts with and promotes loading of GTP on RhoA..domain:The PH (pleckstrin-homology) domain is involved in microtubule binding and targeting to tight junctions..function:Activates Rho-GTPases by promoting the exchange of GDP for GTP. May be involved in epithelial barrier permeability, cell motility and polarization, dendritic spine morphology, antigen presentation, leukemic cell differentiation, cell cycle regulation, and cancer. Binds Rac-GTPases, but does not seem to promote



nucleotide exchange activity toward Rac-GTPases, which was uniquely reported in PubMed:9857026. May stimulate instead the cortical activity of Rac. Inactive toward CDC42, TC10, or Ras-GTPases.,online information:ARHGEF2 entry,PTM:Phosphorylation of Ser-886 by PAK1 induces binding to protein 14-3-3 zeta, promoting its relocation to microtubules and the inhibition of its activit

Background

Rho GTPases play a fundamental role in numerous cellular processes that are initiated by extracellular stimuli that work through G protein coupled receptors. The encoded protein may form complex with G proteins and stimulate rho-dependent signals. Alternatively spliced transcript variants encoding different isoforms have been identified.[provided by RefSeq, Jun 2009],

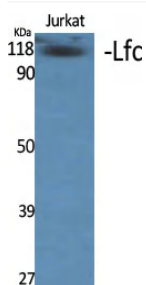
matters needing attention

Avoid repeated freezing and thawing!

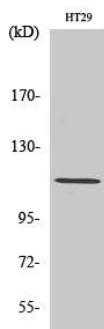
Usage suggestions

This product can be used in immunological reaction related experiments. For more information, please consult technical personnel.

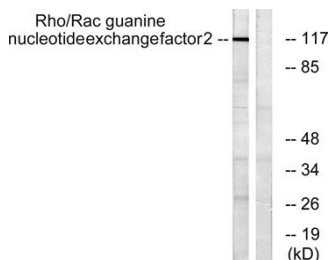
Products Images



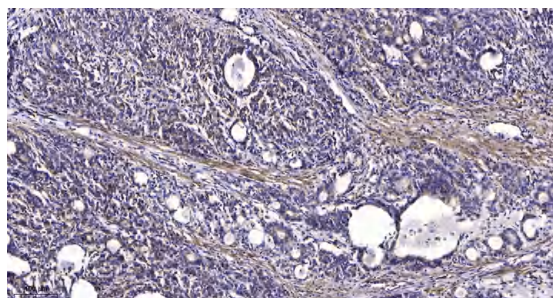
Western Blot analysis of various cells using Lfc Polyclonal Antibody diluted at 1:1000



Western Blot analysis of HT29 cells using Lfc Polyclonal Antibody diluted at 1:1000



Western blot analysis of lysates from NIH/3T3 cells, using Rho/Rac Guanine Nucleotide Exchange Factor 2 Antibody. The lane on the right is blocked with the synthesized peptide.



Immunohistochemical analysis of paraffin-embedded human Gastric adenocarcinoma. 1, Antibody was diluted at 1:200(4° overnight). 2, Tris-EDTA,pH9.0 was used for antigen retrieval. 3,Secondary antibody was diluted at 1:200(room temperature, 45min).